

ECC CS CQ

CSを合併したAMI患者においてMCS導入が必要となった場合、血行再建術とMCS（IABP、IMPELLA/PVAD、またはVA-ECMO）導入のどちらを先に行うべきか？

Systematic Review and Meta-Analysis: Priorities for Early revascularization or Introduction of Mechanical Circulatory Support in Patients with Acute Coronary Syndrome Complicated by Cardiogenic Shock

P (patients): patients with AMI-related CS

I (intervention): Revascularization before MCS

C (comparisons, controls): Revascularization after MCS

O (outcomes): short-term survival (survival to discharge and 1 or 3-month survival), bleeding and stroke as critical outcomes

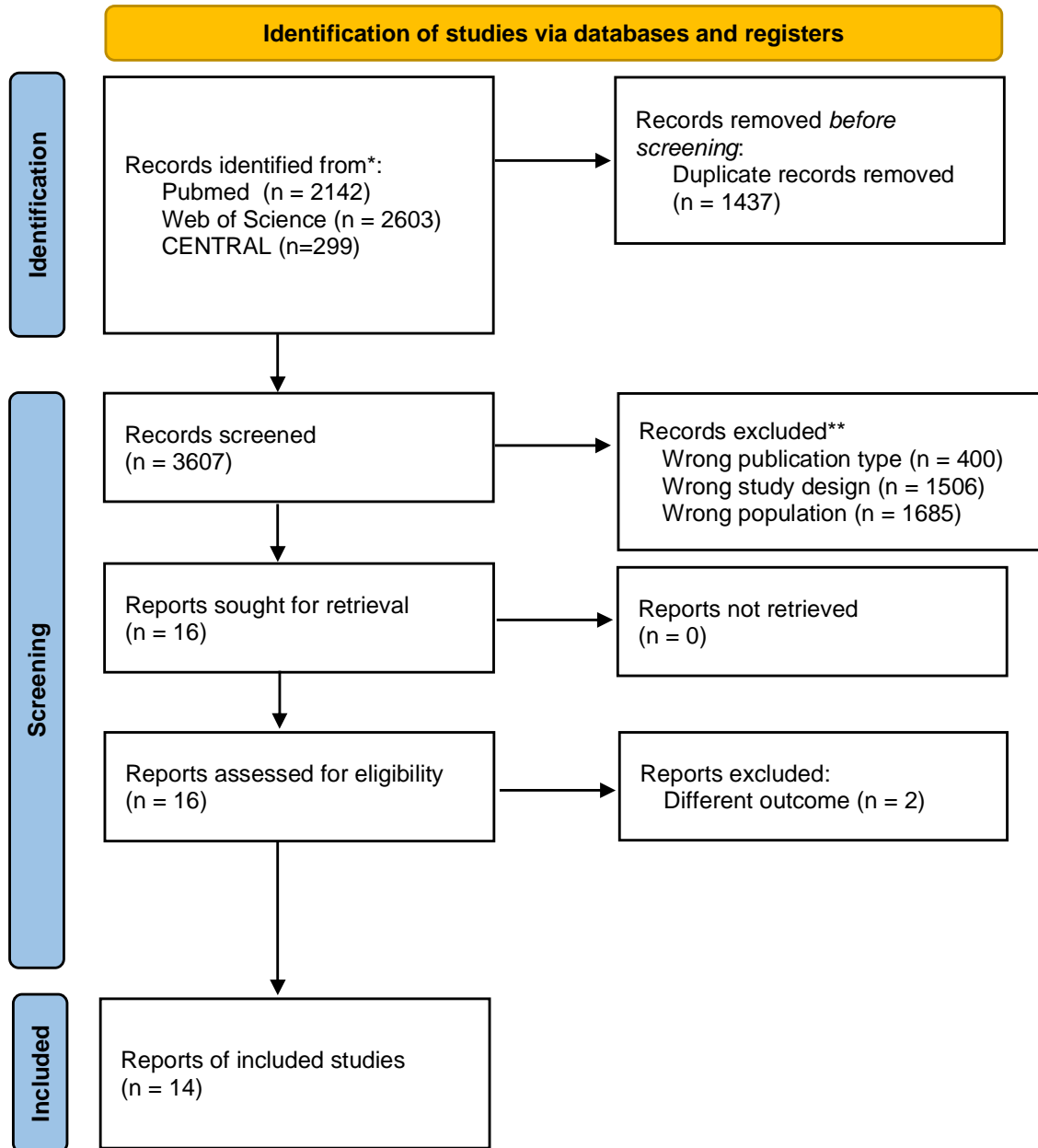
S (study designs): observational studies (there were no randomized controlled trials)

T (timeframe): all literature published up to April 30, 2023.

OSF Preregistration doi:10.17605/OSF.IO/69XQF

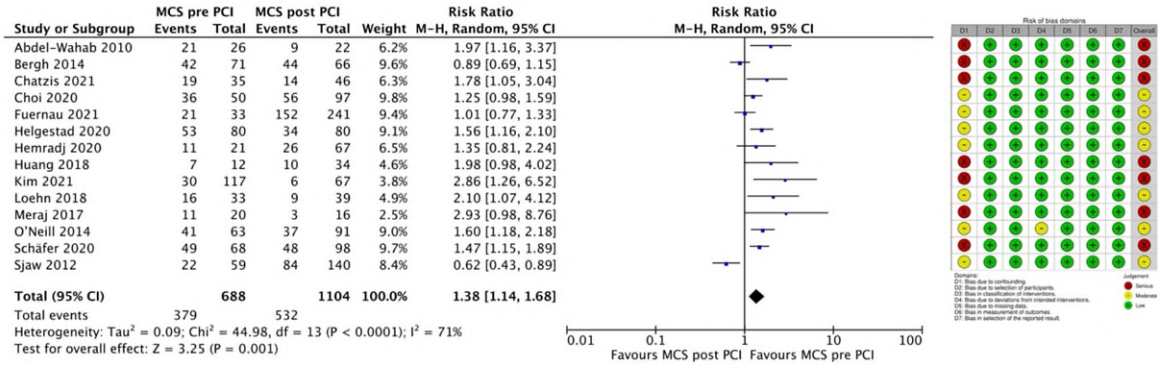
Katasako-Yabumoto A, Sakamoto K, Hashiba K, Yamamoto T, Nakayama N, Hanada H, Nakashima T, Kirigaya J, Ishizu T, Hosoya Y, Kondo T, Okazaki Y, Yamamoto M, Osawa T, Arai M, Tahara Y, Nonogi H, Noguchi T, Tsujimoto Y, Kikuchi M, Matoba T. Priorities for Early Revascularization or Introduction of Mechanical Circulatory Support in Patients With Acute Coronary Syndrome Complicated by Cardiogenic Shock — A Systematic Review and Meta-Analysis —. *Circ Rep.* 2025;7(9):CR-25-0098.
doi:10.1253/circrep.CR-25-0098

PRISMA Flow Chart



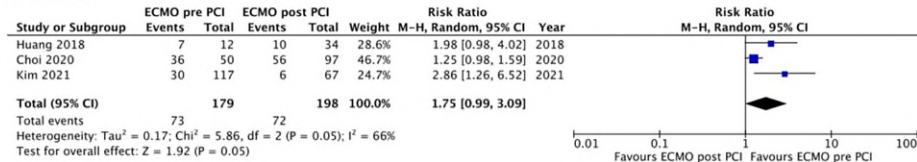
Forest plot for short-term survival. (A) Forest plot for short-term survival and risk of bias domains for all MCS devices, (B) Forest plot of short-term survival for each MCS device, (i) VA-ECMO, (ii) Impella, (iii) IABP.

(A)

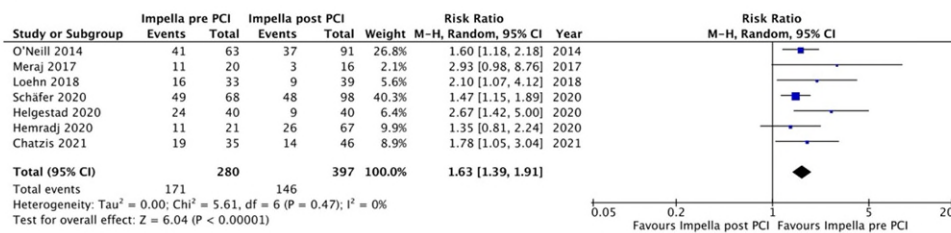


(B)

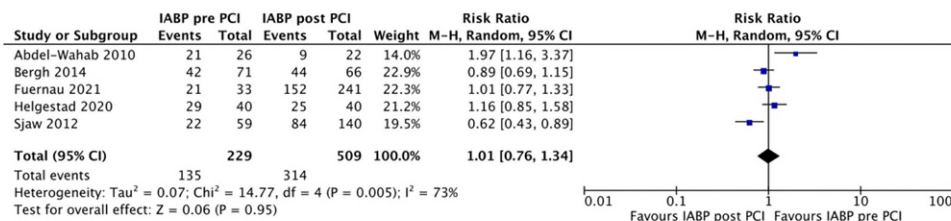
(i) VA-ECMO



(ii) Impella

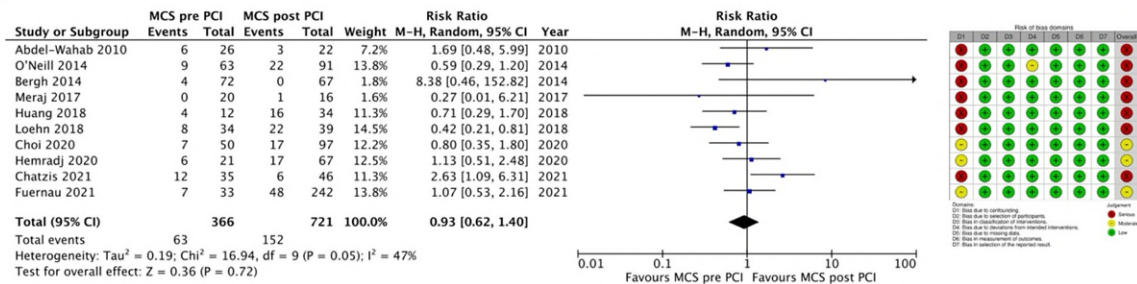


(iii) IABP



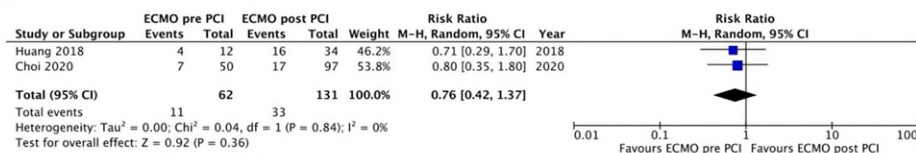
Forest plot for bleeding. (A) Forest plot for bleeding and risk of bias domains for all MCS devices, (B) Forest plot of bleeding for each MCS device, (i) VA-ECMO, (ii) Impella, (iii) IABP.

(A)

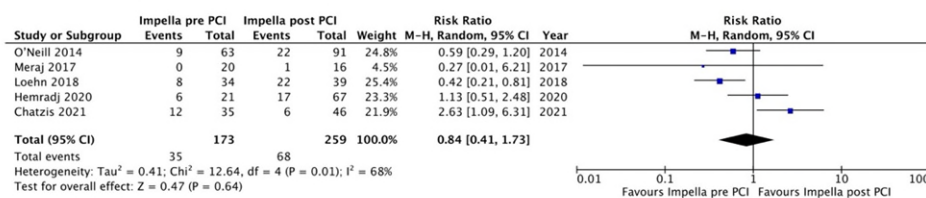


(B)

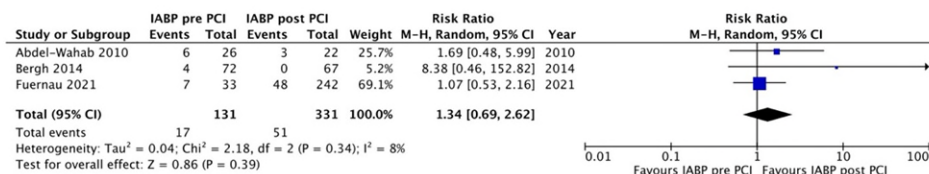
(i) VA-ECMO



(ii) Impella

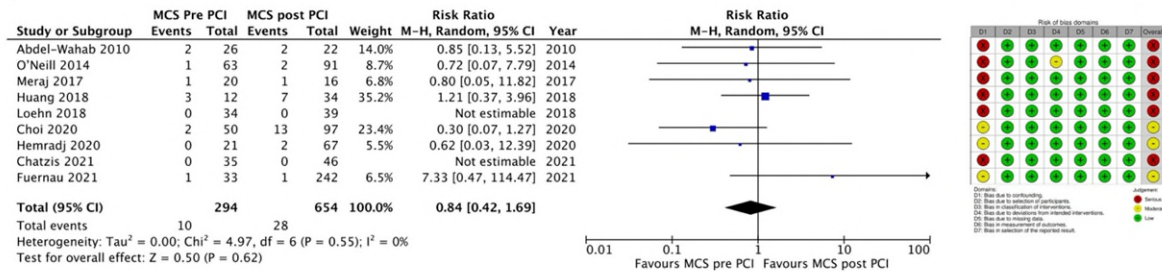


(iii) IABP



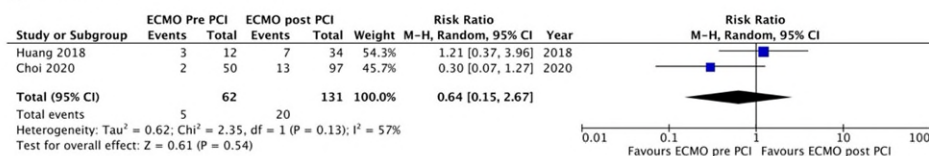
Forest plot for stroke. (A) Forest plot for stroke and risk of bias domains for all MCS devices, (B) Forest plot of stroke for each MCS device, (i) VA-ECMO, (ii) Impella, (iii) IABP.

(A)

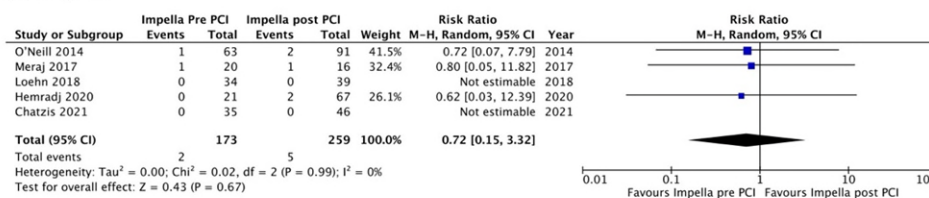


(B)

(i) VA-ECMO



(ii) Impella



(iii) IABP

