

Search strategies of literature databases

Search strings

1. PubMed (MEDLINE & PMC)

#1: (("non st elevat*[Title/Abstract] OR "non st segment"[Title/Abstract] OR "without st segment"[Title/Abstract] OR "without st elevat*[Title/Abstract] OR "non Q-Wave"[Title/Abstract]) AND ("Myocardial Ischemia"[MeSH Terms:noexp] OR "myocardial isch*[Title/Abstract] OR "myocardial infarction"[MeSH Terms:noexp] OR "myocardial infarction*[Title/Abstract] OR "acute coronary syndrome*[Title/Abstract] OR "ACS"[Title/Abstract] OR "acute coronary syndrome"[MeSH Terms] OR "ischemic syndrome*[Title/Abstract] OR "coronary disease"[MeSH Terms] OR "coronary disease*[Title/Abstract] OR "coronary artery disease*[Title/Abstract])) OR "non st elevated myocardial infarction"[MeSH Terms] OR "Non-STEMI"[Title/Abstract] OR "NSTEMI"[Title/Abstract] OR "non-STEACS"[Title/Abstract] OR "non-STE-ACS"[Title/Abstract] OR "nonSTEACS"[Title/Abstract] OR "NSTE-ACS"[Title/Abstract] OR "NSTEACS"[Title/Abstract] OR "non-Q-wave-MI"[Title/Abstract] OR "unstable angina*[Title/Abstract] OR "angina, unstable"[MeSH Terms] OR "acute myocardial infarction"[Title/Abstract] OR "chest pain"[Title/Abstract]

#2: (("timing"[Title/Abstract] OR "timeliness"[Title/Abstract] OR "Time Factors"[MeSH Terms] OR "Time-to-Treatment"[MeSH Terms]) AND ("PCI"[Title/Abstract] OR "percutaneous coronary intervention"[MeSH Terms] OR "percutaneous coronary intervention*[Title/Abstract] OR "percutaneous intervention*[Title/Abstract] OR "PTCA"[Title/Abstract] OR "revascularization"[Title/Abstract] OR "Myocardial Revascularization"[MeSH Terms:noexp] OR "angioplast*[Title/Abstract] OR "angioplasty"[MeSH Terms] OR "atherectomy"[MeSH Terms] OR "atherectom*[Title/Abstract] OR "invasive management"[Title/Abstract] OR "invasive strateg*[Title/Abstract] OR "Coronary Artery Bypass"[MeSH Terms] OR "Bypass grafting"[Title/Abstract] OR "cabg"[Title/Abstract])) OR ("early percutaneous"[Title/Abstract] OR "early invasive"[Title/Abstract] OR "early revascularization"[Title/Abstract] OR "early myocardial revascularization"[Title/Abstract] OR "early PCI"[Title/Abstract] OR "early PTCA"[Title/Abstract] OR "urgent percutaneous"[Title/Abstract] OR "urgent invasive"[Title/Abstract] OR "urgent revascularization"[Title/Abstract] OR "urgent myocardial revascularization"[Title/Abstract] OR "urgent PCI"[Title/Abstract] OR "urgent PTCA"[Title/Abstract] OR "immediate percutaneous"[Title/Abstract] OR "immediate invasive"[Title/Abstract] OR "immediate revascularization"[Title/Abstract] OR "immediate myocardial revascularization"[Title/Abstract] OR "immediate PCI"[Title/Abstract] OR "immediate PTCA"[Title/Abstract] OR "emergency percutaneous"[Title/Abstract] OR "emergency invasive"[Title/Abstract] OR "emergency revascularization"[Title/Abstract] OR "emergency myocardial revascularization"[Title/Abstract] OR "emergency PCI"[Title/Abstract] OR "emergency PTCA"[Title/Abstract] OR "rescue percutaneous"[Title/Abstract] OR "rescue revascularization"[Title/Abstract] OR "rescue PCI"[Title/Abstract] OR "rescue PTCA"[Title/Abstract] OR "early angioplasty"[Title/Abstract] OR "early coronary angioplasty"[Title/Abstract] OR "urgent angioplasty"[Title/Abstract] OR "urgent coronary angioplasty"[Title/Abstract] OR "emergency angioplasty"[Title/Abstract] OR "emergency coronary angioplasty"[Title/Abstract] OR "immediate angioplasty"[Title/Abstract] OR "immediate coronary angioplasty"[Title/Abstract] OR "acute percutaneous"[Title/Abstract] OR "acute invasive"[Title/Abstract] OR "acute revascularization"[Title/Abstract] OR "acute myocardial revascularization"[Title/Abstract] OR "acute PCI"[Title/Abstract] OR "acute PTCA"[Title/Abstract] OR "primary percutaneous"[Title/Abstract] OR "primary invasive"[Title/Abstract] OR "primary revascularization"[Title/Abstract] OR "primary myocardial revascularization"[Title/Abstract] OR "primary PCI"[Title/Abstract] OR "primary PTCA"[Title/Abstract] OR "primary

angioplasty"[Title/Abstract] OR "primary coronary angioplasty"[Title/Abstract] OR "early coronary artery bypass*"[Title/Abstract] OR "early CABG"[Title/Abstract] OR "early aortocoronary bypass*"[Title/Abstract] OR "urgent coronary artery bypass*"[Title/Abstract] OR "urgent CABG"[Title/Abstract] OR "urgent aortocoronary bypass*"[Title/Abstract] OR "immediate coronary artery bypass*"[Title/Abstract] OR "immediate aortocoronary bypass*"[Title/Abstract] OR "emergency coronary artery bypass*"[Title/Abstract] OR "emergency CABG"[Title/Abstract] OR "emergency aortocoronary bypass*"[Title/Abstract] OR "rescue CABG"[Title/Abstract] OR "primary coronary artery bypass*"[Title/Abstract] OR "primary CABG"[Title/Abstract] OR "primary aortocoronary bypass*"[Title/Abstract])

#3: ("heart failure"[Title/Abstract] OR "cardiac failure"[Title/Abstract] OR "myocardial failure"[Title/Abstract] OR "heart failure"[MeSH Terms] OR "Killip"[Title/Abstract] OR "high-risk"[Title/Abstract] OR "higher-risk"[Title/Abstract] OR "HF"[Title/Abstract] OR "AHF"[Title/Abstract] OR "CHF"[Title/Abstract] OR "ADHF"[Title/Abstract])

#4: "Extracorporeal Membrane Oxygenation"[MeSH Terms] OR "percutaneous cardiopulmonary support"[Title/Abstract] OR "PCPS"[Title/Abstract] OR "ECMO"[Title/Abstract] OR "extracorporeal membrane oxygenat*"[Title/Abstract] OR "extra corporeal membrane oxygenat*"[Title/Abstract] OR "venoarterial extracorporeal membrane oxygenat*"[Title/Abstract] OR "veno arterial extracorporeal membrane oxygenat*"[Title/Abstract] OR "IMPELLA"[Title/Abstract] OR "intra-aortic balloon pump"[Title/Abstract] OR "IABP"[Title/Abstract] OR "percutaneous mechanical*"[Title/Abstract] OR "mechanical circulatory"[Title/Abstract] OR "MCS"[Title/Abstract] OR "ventricular assist device*"[Title/Abstract] OR "device implantation"[Title/Abstract] OR "ECLS"[Title/Abstract] OR "Extracorporeal life support"[Title/Abstract] OR "Extra-corporeal life support"[Title/Abstract] OR "non invasive positive pressure ventilat*"[Title/Abstract] OR "noninvasive positive pressure ventilat*"[Title/Abstract] OR "nppv"[Title/Abstract] OR "airway management"[Title/Abstract] OR "airway management"[MeSH Terms] OR "mechanical ventilation"[Title/Abstract] OR "mechanical ventilation"[Title/Abstract] OR "IMV"[Title/Abstract] OR "Endotracheal tube"[Title/Abstract] OR "Intratracheal intubation"[Title/Abstract] OR "Endotracheal intubation"[Title/Abstract]

#5: #1 AND #3 AND (#2 OR #4)

2. Web of Science (Science Citation Index Expanded(SCIE))

#1: (((TI="non st elevat*" OR AB="non st elevat*" OR AK="non st elevat*" OR KP="non st elevat*") OR (TI="non st segment" OR AB="non st segment" OR AK="non st segment" OR KP="non st segment")) OR (TI="without st segment" OR AB="without st segment" OR AK="without st segment" OR KP="without st segment")) OR (TI="without st elevat*" OR AB="without st elevat*" OR AK="without st elevat*" OR KP="without st elevat*") OR (TI="non Q-Wave" OR AB="non Q-Wave" OR AK="non Q-Wave" OR KP="non Q-Wave")) AND ((TI="myocardial isch*" OR AB="myocardial isch*" OR AK="myocardial isch*" OR KP="myocardial isch*") OR (TI="myocardial infarction*" OR AB="myocardial infarction*" OR AK="myocardial infarction*" OR KP="myocardial infarction*") OR (TI="acute coronary syndrome*" OR AB="acute coronary syndrome*" OR AK="acute coronary syndrome*" OR KP="acute coronary syndrome*") OR (TI=ACS OR AB=ACS OR AK=ACS OR KP=ACS) OR (TI="ischemic syndrome*" OR AB="ischemic syndrome*" OR AK="ischemic syndrome*" OR KP="ischemic syndrome*") OR (TI="coronary disease*" OR AB="coronary disease*" OR AK="coronary disease*" OR KP="coronary disease*") OR (TI="coronary artery disease*" OR AB="coronary artery disease*" OR AK="coronary artery disease*" OR KP="coronary artery disease*")))) OR (TI=Non-STEMI OR AB=Non-STEMI OR AK=Non-STEMI OR KP=Non-STEMI) OR (TI=NSTEMI OR AB=NSTEMI OR AK=NSTEMI OR KP=NSTEMI) OR (TI=non-STEACS OR AB=non-STEACS OR AK=non-STEACS OR KP=non-STEACS) OR (TI=non-STE-ACS OR AB=non-STE-ACS OR AK=non-STE-ACS OR KP=non-STE-ACS) OR (TI=nonSTEACS OR AB=nonSTEACS OR AK=nonSTEACS OR

KP=nonSTEACS) OR (TI=NSTE-ACS OR AB=NSTE-ACS OR AK=NSTE-ACS OR KP=NSTE-ACS) OR (TI=NSTEACS OR AB=NSTEACS OR AK=NSTEACS OR KP=NSTEACS) OR (TI=non-Q-wave-MI OR AB=non-Q-wave-MI OR AK=non-Q-wave-MI OR KP=non-Q-wave-MI) OR (TI="unstable angina*" OR AB="unstable angina*" OR AK="unstable angina*" OR KP="unstable angina*") OR (TI="chest pain" OR AB="chest pain" OR AK="chest pain" OR KP="chest pain") OR (TI="acute myocardial infarction" OR AB="acute myocardial infarction" OR AK="acute myocardial infarction" OR KP="acute myocardial infarction")

#2: (((TI=timing OR AB=timing OR AK=timing OR KP=timing) OR (TI=timeliness OR AB=timeliness OR AK=timeliness OR KP=timeliness)) AND ((TI=PCI OR AB=PCI OR AK=PCI OR KP=PCI) OR (TI="percutaneous coronary intervention*" OR AB="percutaneous coronary intervention*" OR AK="percutaneous coronary intervention*" OR KP="percutaneous coronary intervention*") OR (TI="percutaneous intervention*" OR AB="percutaneous intervention*" OR AK="percutaneous intervention*" OR KP="percutaneous intervention*") OR (TI=PTCA OR AB=PTCA OR AK=PTCA OR KP=PTCA) OR (TI=revascularization OR AB=revascularization OR AK=revascularization OR KP=revascularization) OR (TI=angioplast* OR AB=angioplast* OR AK=angioplast* OR KP=angioplast*) OR (TI=atherectom* OR AB=atherectom* OR AK=atherectom* OR KP=atherectom*) OR (TI="invasive management" OR AB="invasive management" OR AK="invasive management" OR KP="invasive management") OR (TI="invasive strateg*" OR AB="invasive strateg*" OR AK="invasive strateg*" OR KP="invasive strateg*") OR (TI="Bypass grafting" OR AB="Bypass grafting" OR AK="Bypass grafting" OR KP="Bypass grafting") OR (TI=cabg OR AB=cabg OR AK=cabg OR KP=cabg))) OR (((TI="early percutaneous" OR AB="early percutaneous" OR AK="early percutaneous" OR KP="early percutaneous") OR (TI="early invasive" OR AB="early invasive" OR AK="early invasive" OR KP="early invasive") OR (TI="early revascularization" OR AB="early revascularization" OR AK="early revascularization" OR KP="early revascularization") OR (TI="early myocardial revascularization" OR AB="early myocardial revascularization" OR AK="early myocardial revascularization" OR KP="early myocardial revascularization") OR (TI="early PCI" OR AB="early PCI" OR AK="early PCI" OR KP="early PCI") OR (TI="early PTCA" OR AB="early PTCA" OR AK="early PTCA" OR KP="early PTCA") OR (TI="urgent percutaneous" OR AB="urgent percutaneous" OR AK="urgent percutaneous" OR KP="urgent percutaneous") OR (TI="urgent invasive" OR AB="urgent invasive" OR AK="urgent invasive" OR KP="urgent invasive") OR (TI="urgent revascularization" OR AB="urgent revascularization" OR AK="urgent revascularization" OR KP="urgent revascularization") OR (TI="urgent myocardial revascularization" OR AB="urgent myocardial revascularization" OR AK="urgent myocardial revascularization" OR KP="urgent myocardial revascularization") OR (TI="urgent PCI" OR AB="urgent PCI" OR AK="urgent PCI" OR KP="urgent PCI") OR (TI="urgent PTCA" OR AB="urgent PTCA" OR AK="urgent PTCA" OR KP="urgent PTCA") OR (TI="immediate percutaneous" OR AB="immediate percutaneous" OR AK="immediate percutaneous" OR KP="immediate percutaneous") OR (TI="immediate invasive" OR AB="immediate invasive" OR AK="immediate invasive" OR KP="immediate invasive") OR (TI="immediate revascularization" OR AB="immediate revascularization" OR AK="immediate revascularization" OR KP="immediate revascularization") OR (TI="immediate myocardial revascularization" OR AB="immediate myocardial revascularization" OR AK="immediate myocardial revascularization" OR KP="immediate myocardial revascularization") OR (TI="immediate PCI" OR AB="immediate PCI" OR AK="immediate PCI" OR KP="immediate PCI") OR (TI="immediate PTCA" OR AB="immediate PTCA" OR AK="immediate PTCA" OR KP="immediate PTCA") OR (TI="emergency percutaneous" OR AB="emergency percutaneous" OR AK="emergency percutaneous" OR KP="emergency percutaneous") OR (TI="emergency invasive" OR AB="emergency invasive" OR AK="emergency invasive" OR KP="emergency invasive") OR (TI="emergency revascularization" OR AB="emergency revascularization" OR AK="emergency revascularization" OR KP="emergency revascularization") OR (TI="emergency myocardial revascularization" OR AB="emergency myocardial revascularization" OR AK="emergency myocardial revascularization" OR KP="emergency myocardial revascularization")

revascularization") OR (TI="emergency PCI" OR AB="emergency PCI" OR AK="emergency PCI" OR KP="emergency PCI") OR (TI="emergency PTCA" OR AB="emergency PTCA" OR AK="emergency PTCA" OR KP="emergency PTCA") OR (TI="rescue percutaneous" OR AB="rescue percutaneous" OR AK="rescue percutaneous" OR KP="rescue percutaneous") OR (TI="rescue revascularization" OR AB="rescue revascularization" OR AK="rescue revascularization" OR KP="rescue revascularization") OR (TI="rescue PCI" OR AB="rescue PCI" OR AK="rescue PCI" OR KP="rescue PCI") OR (TI="rescue PTCA" OR AB="rescue PTCA" OR AK="rescue PTCA" OR KP="rescue PTCA") OR (TI="early angioplasty" OR AB="early angioplasty" OR AK="early angioplasty" OR KP="early angioplasty") OR (TI="early coronary angioplasty" OR AB="early coronary angioplasty" OR AK="early coronary angioplasty" OR KP="early coronary angioplasty") OR (TI="urgent angioplasty" OR AB="urgent angioplasty" OR AK="urgent angioplasty" OR KP="urgent angioplasty") OR (TI="urgent coronary angioplasty" OR AB="urgent coronary angioplasty" OR AK="urgent coronary angioplasty" OR KP="urgent coronary angioplasty") OR (TI="emergency angioplasty" OR AB="emergency angioplasty" OR AK="emergency angioplasty" OR KP="emergency angioplasty") OR (TI="emergency coronary angioplasty" OR AB="emergency coronary angioplasty" OR AK="emergency coronary angioplasty" OR KP="emergency coronary angioplasty") OR (TI="immediate angioplasty" OR AB="immediate angioplasty" OR AK="immediate angioplasty" OR KP="immediate angioplasty") OR (TI="immediate coronary angioplasty" OR AB="immediate coronary angioplasty" OR AK="immediate coronary angioplasty" OR KP="immediate coronary angioplasty") OR (TI="acute percutaneous" OR AB="acute percutaneous" OR AK="acute percutaneous" OR KP="acute percutaneous") OR (TI="acute invasive" OR AB="acute invasive" OR AK="acute invasive" OR KP="acute invasive") OR (TI="acute revascularization" OR AB="acute revascularization" OR AK="acute revascularization" OR KP="acute revascularization") OR (TI="acute myocardial revascularization" OR AB="acute myocardial revascularization" OR AK="acute myocardial revascularization" OR KP="acute myocardial revascularization") OR (TI="acute PCI" OR AB="acute PCI" OR AK="acute PCI" OR KP="acute PCI") OR (TI="acute PTCA" OR AB="acute PTCA" OR AK="acute PTCA" OR KP="acute PTCA") OR (TI="primary percutaneous" OR AB="primary percutaneous" OR AK="primary percutaneous" OR KP="primary percutaneous") OR (TI="primary invasive" OR AB="primary invasive" OR AK="primary invasive" OR KP="primary invasive") OR (TI="primary revascularization" OR AB="primary revascularization" OR AK="primary revascularization" OR KP="primary revascularization") OR (TI="primary myocardial revascularization" OR AB="primary myocardial revascularization" OR AK="primary myocardial revascularization" OR KP="primary myocardial revascularization") OR (TI="primary PCI" OR AB="primary PCI" OR AK="primary PCI" OR KP="primary PCI") OR (TI="primary PTCA" OR AB="primary PTCA" OR AK="primary PTCA" OR KP="primary PTCA") OR (TI="primary angioplasty" OR AB="primary angioplasty" OR AK="primary angioplasty" OR KP="primary angioplasty") OR (TI="primary coronary angioplasty" OR AB="primary coronary angioplasty" OR AK="primary coronary angioplasty" OR KP="primary coronary angioplasty") OR (TI="early coronary artery bypass*" OR AB="early coronary artery bypass*" OR AK="early coronary artery bypass*" OR KP="early coronary artery bypass*") OR (TI="early CABG" OR AB="early CABG" OR AK="early CABG" OR KP="early CABG") OR (TI="early aortocoronary bypass*" OR AB="early aortocoronary bypass*" OR AK="early aortocoronary bypass*" OR KP="early aortocoronary bypass*") OR (TI="urgent coronary artery bypass*" OR AB="urgent coronary artery bypass*" OR AK="urgent coronary artery bypass*" OR KP="urgent coronary artery bypass*") OR (TI="urgent CABG" OR AB="urgent CABG" OR AK="urgent CABG" OR KP="urgent CABG") OR (TI="urgent aortocoronary bypass*" OR AB="urgent aortocoronary bypass*" OR AK="urgent aortocoronary bypass*" OR KP="urgent aortocoronary bypass*") OR (TI="immediate coronary artery bypass*" OR AB="immediate coronary artery bypass*" OR AK="immediate coronary artery bypass*" OR KP="immediate coronary artery bypass*") OR (TI="immediate aortocoronary bypass*" OR AB="immediate aortocoronary bypass*" OR AK="immediate aortocoronary bypass*" OR KP="immediate aortocoronary bypass*") OR (TI="emergency coronary

artery bypass*" OR AB="emergency coronary artery bypass*" OR AK="emergency coronary artery bypass*" OR KP="emergency coronary artery bypass*") OR (TI="emergency CABG" OR AB="emergency CABG" OR AK="emergency CABG" OR KP="emergency CABG") OR (TI="emergency aortocoronary bypass*" OR AB="emergency aortocoronary bypass*" OR AK="emergency aortocoronary bypass*" OR KP="emergency aortocoronary bypass*") OR (TI="rescue CABG" OR AB="rescue CABG" OR AK="rescue CABG" OR KP="rescue CABG") OR (TI="primary coronary artery bypass*" OR AB="primary coronary artery bypass*" OR AK="primary coronary artery bypass*" OR KP="primary coronary artery bypass*") OR (TI="primary CABG" OR AB="primary CABG" OR AK="primary CABG" OR KP="primary CABG") OR (TI="primary aortocoronary bypass*" OR AB="primary aortocoronary bypass*" OR AK="primary aortocoronary bypass*" OR KP="primary aortocoronary bypass*"))

#3: ((TI="heart failure" OR AB="heart failure" OR AK="heart failure" OR KP="heart failure") OR (TI="cardiac failure" OR AB="cardiac failure" OR AK="cardiac failure" OR KP="cardiac failure") OR (TI="myocardial failure" OR AB="myocardial failure" OR AK="myocardial failure" OR KP="myocardial failure") OR (TI=Killip OR AB=Killip OR AK=Killip OR KP=Killip) OR (TI=high-risk OR AB=high-risk OR AK=high-risk OR KP=high-risk) OR (TI=higher-risk OR AB=higher-risk OR AK=higher-risk OR KP=higher-risk) OR (TI=HF OR AB=HF OR AK=HF OR KP=HF) OR (TI=AHF OR AB=AHF OR AK=AHF OR KP=AHF) OR (TI=CHF OR AB=CHF OR AK=CHF OR KP=CHF) OR (TI=ADHF OR AB=ADHF OR AK=ADHF OR KP=ADHF))

#4: (TI="percutaneous cardiopulmonary support" OR AB="percutaneous cardiopulmonary support" OR AK="percutaneous cardiopulmonary support" OR KP="percutaneous cardiopulmonary support") OR (TI=PCPS OR AB=PCPS OR AK=PCPS OR KP=PCPS) OR (TI=ECMO OR AB=ECMO OR AK=ECMO OR KP=ECMO) OR (TI="extracorporeal membrane oxygenat*" OR AB="extracorporeal membrane oxygenat*" OR AK="extracorporeal membrane oxygenat*" OR KP="extracorporeal membrane oxygenat*") OR (TI="extra corporeal membrane oxygenat*" OR AB="extra corporeal membrane oxygenat*" OR AK="extra corporeal membrane oxygenat*" OR KP="extra corporeal membrane oxygenat*") OR (TI="venoarterial extracorporeal membrane oxygenat*" OR AB="venoarterial extracorporeal membrane oxygenat*" OR AK="venoarterial extracorporeal membrane oxygenat*" OR KP="venoarterial extracorporeal membrane oxygenat*") OR (TI="veno arterial extracorporeal membrane oxygenat*" OR AB="veno arterial extracorporeal membrane oxygenat*" OR AK="veno arterial extracorporeal membrane oxygenat*" OR KP="veno arterial extracorporeal membrane oxygenat*") OR (TI=IMPELLA OR AB=IMPELLA OR AK=IMPELLA OR KP=IMPELLA) OR (TI="intra-aortic balloon pump" OR AB="intra-aortic balloon pump" OR AK="intra-aortic balloon pump" OR KP="intra-aortic balloon pump") OR (TI=IABP OR AB=IABP OR AK=IABP OR KP=IABP) OR (TI="percutaneous mechanical*" OR AB="percutaneous mechanical*" OR AK="percutaneous mechanical*" OR KP="percutaneous mechanical*") OR (TI="mechanical circulatory" OR AB="mechanical circulatory" OR AK="mechanical circulatory" OR KP="mechanical circulatory") OR (TI=MCS OR AB=MCS OR AK=MCS OR KP=MCS) OR (TI="ventricular assist device*" OR AB="ventricular assist device*" OR AK="ventricular assist device*" OR KP="ventricular assist device*") OR (TI="device implantation" OR AB="device implantation" OR AK="device implantation" OR KP="device implantation") OR (TI=ECLS OR AB=ECLS OR AK=ECLS OR KP=ECLS) OR (TI="Extracorporeal life support" OR AB="Extracorporeal life support" OR AK="Extracorporeal life support" OR KP="Extracorporeal life support") OR (TI="Extra-corporeal life support" OR AB="Extra-corporeal life support" OR AK="Extra-corporeal life support" OR KP="Extra-corporeal life support") OR (TI="non invasive positive pressure ventilat*" OR AB="non invasive positive pressure ventilat*" OR AK="non invasive positive pressure ventilat*" OR KP="non invasive positive pressure ventilat*") OR (TI="noninvasive positive pressure ventilat*" OR AB="noninvasive positive pressure ventilat*" OR AK="noninvasive positive pressure ventilat*" OR KP="noninvasive positive pressure ventilat*") OR (TI=nppv OR AB=nppv OR AK=nppv OR KP=nppv) OR (TI="airway management" OR AB="airway management" OR AK="airway management" OR KP="airway

management") OR (TI="mechanical ventilation" OR AB="mechanical ventilation" OR AK="mechanical ventilation" OR KP="mechanical ventilation") OR (TI="mechanical ventilation" OR AB="mechanical ventilation" OR AK="mechanical ventilation" OR KP="mechanical ventilation") OR (TI=IMV OR AB=IMV OR AK=IMV OR KP=IMV) OR (TI="Endotracheal tube" OR AB="Endotracheal tube" OR AK="Endotracheal tube" OR KP="Endotracheal tube") OR (TI="Intratracheal intubation" OR AB="Intratracheal intubation" OR AK="Intratracheal intubation" OR KP="Intratracheal intubation") OR (TI="Endotracheal intubation" OR AB="Endotracheal intubation" OR AK="Endotracheal intubation" OR KP="Endotracheal intubation")

#5: #1 AND #3 AND (#2 OR #4)

3. Cochrane Library (Cochrane Central Register of Controlled Trials(CENTRAL))

#1: (((("non st" NEXT elevat*):ti,ab,kw OR "non st segment":ti,ab,kw OR "without st segment":ti,ab,kw OR ("without st" NEXT elevat*):ti,ab,kw OR "non Q-Wave":ti,ab,kw) AND ([mh ^"Myocardial Ischemia"] OR ("myocardial" NEXT isch*):ti,ab,kw OR [mh ^"myocardial infarction"] OR ("myocardial" NEXT infarction*):ti,ab,kw OR ("acute coronary" NEXT syndrome*):ti,ab,kw OR ACS:ti,ab,kw OR [mh "acute coronary syndrome"] OR ("ischemic" NEXT syndrome*):ti,ab,kw OR [mh "coronary disease"] OR ("coronary" NEXT disease*):ti,ab,kw OR ("coronary artery" NEXT disease*):ti,ab,kw)) OR [mh "non st elevated myocardial infarction"] OR Non-STEMI:ti,ab,kw OR NSTEMI:ti,ab,kw OR non-STEACS:ti,ab,kw OR non-STE-ACS:ti,ab,kw OR nonSTEACS:ti,ab,kw OR NSTE-ACS:ti,ab,kw OR NSTEMI:ti,ab,kw OR non-Q-wave-MI:ti,ab,kw OR ("unstable" NEXT angina*):ti,ab,kw OR [mh "angina, unstable"] OR "chest pain":ti,ab,kw OR "acute myocardial infarction":ti,ab,kw

#2: ((timing:ti,ab,kw OR timeliness:ti,ab,kw OR [mh "Time Factors"] OR [mh Time-to-Treatment]) AND (PCI:ti,ab,kw OR [mh "percutaneous coronary intervention"] OR ("percutaneous coronary" NEXT intervention*):ti,ab,kw OR ("percutaneous" NEXT intervention*):ti,ab,kw OR PTCA:ti,ab,kw OR revascularization:ti,ab,kw OR [mh ^"Myocardial Revascularization"] OR angioplast*:ti,ab,kw OR [mh angioplasty] OR [mh atherectomy] OR atherectom*:ti,ab,kw OR "invasive management":ti,ab,kw OR ("invasive" NEXT strateg*):ti,ab,kw OR [mh "Coronary Artery Bypass"] OR "Bypass grafting":ti,ab,kw OR cabg:ti,ab,kw)) OR ("early percutaneous":ti,ab,kw OR "early invasive":ti,ab,kw OR "early revascularization":ti,ab,kw OR "early myocardial revascularization":ti,ab,kw OR "early PCI":ti,ab,kw OR "early PTCA":ti,ab,kw OR "urgent percutaneous":ti,ab,kw OR "urgent invasive":ti,ab,kw OR "urgent revascularization":ti,ab,kw OR "urgent myocardial revascularization":ti,ab,kw OR "urgent PCI":ti,ab,kw OR "urgent PTCA":ti,ab,kw OR "immediate percutaneous":ti,ab,kw OR "immediate invasive":ti,ab,kw OR "immediate revascularization":ti,ab,kw OR "immediate myocardial revascularization":ti,ab,kw OR "immediate PCI":ti,ab,kw OR "immediate PTCA":ti,ab,kw OR "emergency percutaneous":ti,ab,kw OR "emergency invasive":ti,ab,kw OR "emergency revascularization":ti,ab,kw OR "emergency myocardial revascularization":ti,ab,kw OR "emergency PCI":ti,ab,kw OR "emergency PTCA":ti,ab,kw OR "rescue percutaneous":ti,ab,kw OR "rescue revascularization":ti,ab,kw OR "rescue PCI":ti,ab,kw OR "rescue PTCA":ti,ab,kw OR "early angioplasty":ti,ab,kw OR "early coronary angioplasty":ti,ab,kw OR "urgent angioplasty":ti,ab,kw OR "urgent coronary angioplasty":ti,ab,kw OR "emergency angioplasty":ti,ab,kw OR "emergency coronary angioplasty":ti,ab,kw OR "immediate angioplasty":ti,ab,kw OR "immediate coronary angioplasty":ti,ab,kw OR "acute percutaneous":ti,ab,kw OR "acute invasive":ti,ab,kw OR "acute revascularization":ti,ab,kw OR "acute myocardial revascularization":ti,ab,kw OR "acute PCI":ti,ab,kw OR "acute PTCA":ti,ab,kw OR "primary percutaneous":ti,ab,kw OR "primary invasive":ti,ab,kw OR "primary revascularization":ti,ab,kw OR "primary myocardial revascularization":ti,ab,kw OR "primary PCI":ti,ab,kw OR "primary PTCA":ti,ab,kw OR "primary angioplasty":ti,ab,kw OR "primary coronary angioplasty":ti,ab,kw OR ("early coronary artery" NEXT bypass*):ti,ab,kw OR "early CABG":ti,ab,kw OR ("early aortocoronary" NEXT bypass*):ti,ab,kw

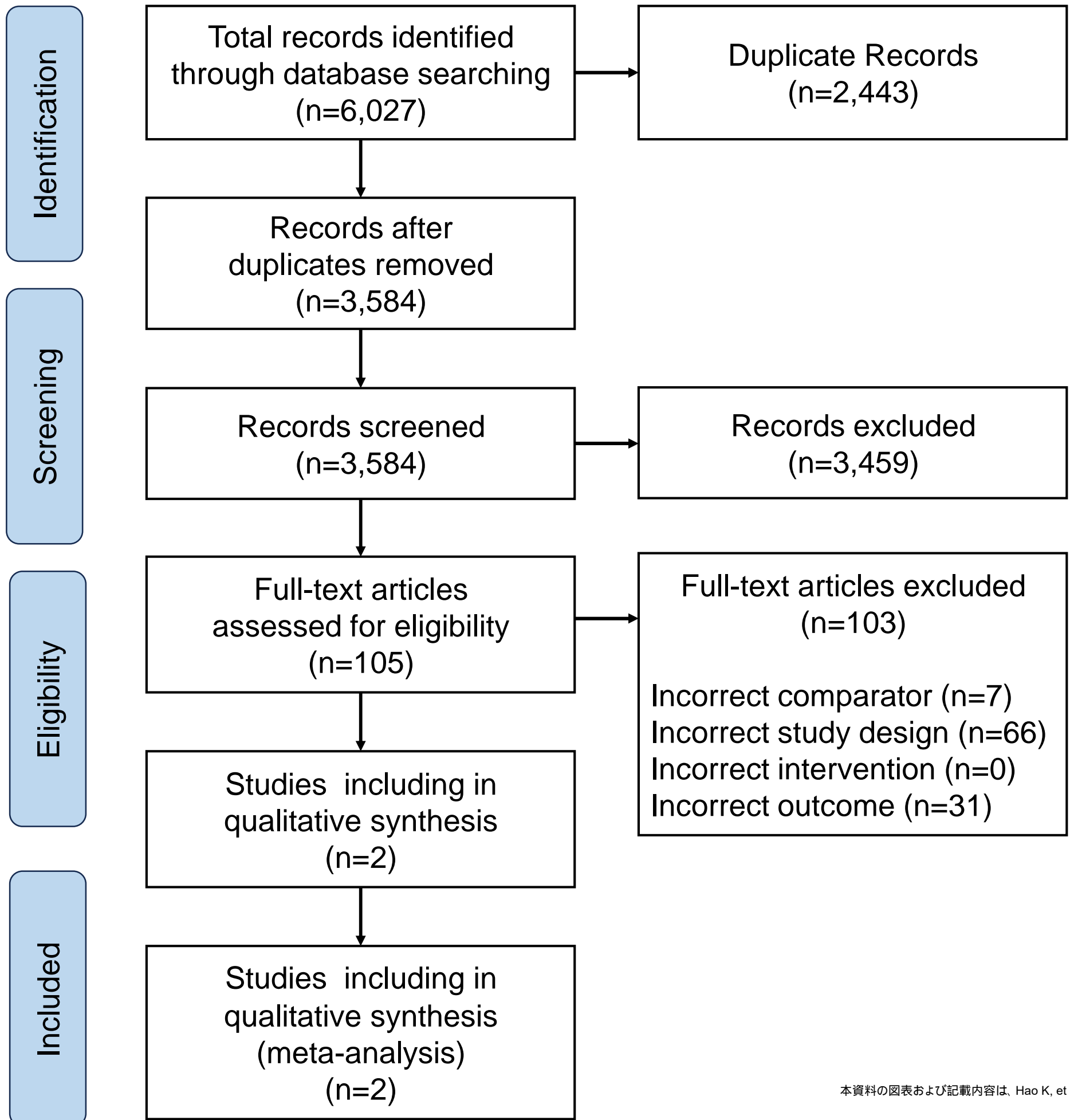
OR ("urgent coronary artery" NEXT bypass*):ti,ab,kw OR "urgent CABG":ti,ab,kw OR ("urgent aortocoronary" NEXT bypass*):ti,ab,kw OR ("immediate coronary artery" NEXT bypass*):ti,ab,kw OR ("immediate aortocoronary" NEXT bypass*):ti,ab,kw OR ("emergency coronary artery" NEXT bypass*):ti,ab,kw OR "emergency CABG":ti,ab,kw OR ("emergency aortocoronary" NEXT bypass*):ti,ab,kw OR "rescue CABG":ti,ab,kw OR ("primary coronary artery" NEXT bypass*):ti,ab,kw OR "primary CABG":ti,ab,kw OR ("primary aortocoronary" NEXT bypass*):ti,ab,kw)

#3: ("heart failure":ti,ab,kw OR "cardiac failure":ti,ab,kw OR "myocardial failure":ti,ab,kw OR [mh "heart failure"] OR Killip:ti,ab,kw OR high-risk:ti,ab,kw OR higher-risk:ti,ab,kw OR HF:ti,ab,kw OR AHF:ti,ab,kw OR CHF:ti,ab,kw OR ADHF:ti,ab,kw)

#4: ([mh "Extracorporeal Membrane Oxygenation"] OR "percutaneous cardiopulmonary support":ti,ab,kw OR PCPS:ti,ab,kw OR ECMO:ti,ab,kw OR ("extracorporeal membrane" NEXT oxygenat*):ti,ab,kw OR ("extra corporeal membrane" NEXT oxygenat*):ti,ab,kw OR ("venoarterial extracorporeal membrane" NEXT oxygenat*):ti,ab,kw OR ("veno arterial extracorporeal membrane" NEXT oxygenat*):ti,ab,kw OR IMPELLA:ti,ab,kw OR "intra-aortic balloon pump":ti,ab,kw OR IABP:ti,ab,kw OR ("percutaneous" NEXT mechanical*):ti,ab,kw OR "mechanical circulatory":ti,ab,kw OR MCS:ti,ab,kw OR ("ventricular assist" NEXT device*):ti,ab,kw OR "device implantation":ti,ab,kw OR ECLS:ti,ab,kw OR "Extracorporeal life support":ti,ab,kw OR "Extra-corporeal life support":ti,ab,kw OR ("non invasive positive pressure" NEXT ventilat*):ti,ab,kw OR ("noninvasive positive pressure" NEXT ventilat*):ti,ab,kw OR nppv:ti,ab,kw OR "airway management":ti,ab,kw OR [mh "airway management"] OR "mechanical ventilation":ti,ab,kw OR "mechanical ventilation":ti,ab,kw OR IMV:ti,ab,kw OR "Endotracheal tube":ti,ab,kw OR "Intratracheal intubation":ti,ab,kw OR "Endotracheal intubation":ti,ab,kw)

#5: #1 AND #3 AND (#2 OR #4)

PRISMA flow chart



解析対象とした研究の概要

研究名	研究デザイン	患者数 早期 vs. 待機的	侵襲的冠動脈造影のタイミング 早期 vs. 待機的	血行再建の割合 早期 vs. 待機的
ELISA-3 (Badings et al, 2017)	多施設RCT	269名 vs. 265名	2.6時間 vs. 54.9時間	PCI: 180名 (66.7%) vs. 164名 (61.9%) CABG: 62名 (23.2%) vs. 68名 (12.4%)
VERDICT (Butt et al. 2021)	多施設RCT	1075名 vs. 1072名	4.7時間 vs. 61.6時間	PCI: 498 (46.3) vs. 442 (41.2) CABG: 132 (12.2) vs. 132 (12.3)

研究名	うっ血性心不全の定義	うっ血性心不全合併患者 Early vs. Delayed	Primary endpoint	フォローアップ期間
ELISA-3 (Badings et al, 2017)	NT-ProBNP \geq 659 pg/ml	119名 vs. 103名	死亡, 心筋梗塞, 狭心症再発	2年
VERDICT (Butt et al. 2021)	Killip分類 2度または3度	Killip分類 2度: 33名 vs. 37名 Killip分類 3度: 11名 vs. 7名	死亡, 心筋梗塞, 心不全入院, 難治性狭心症による入院	4.3年 (中央値)

エビデンスプロファイル

2年間の死亡または心筋梗塞再発

研究数	デザイン	エビデンスの確実性評価				
		バイアスリスク	非一貫性	間接性	不精確	その他の考慮事項
2	RCT	重大 ^A	重大でない	重大 ^B	重大 ^C	なし

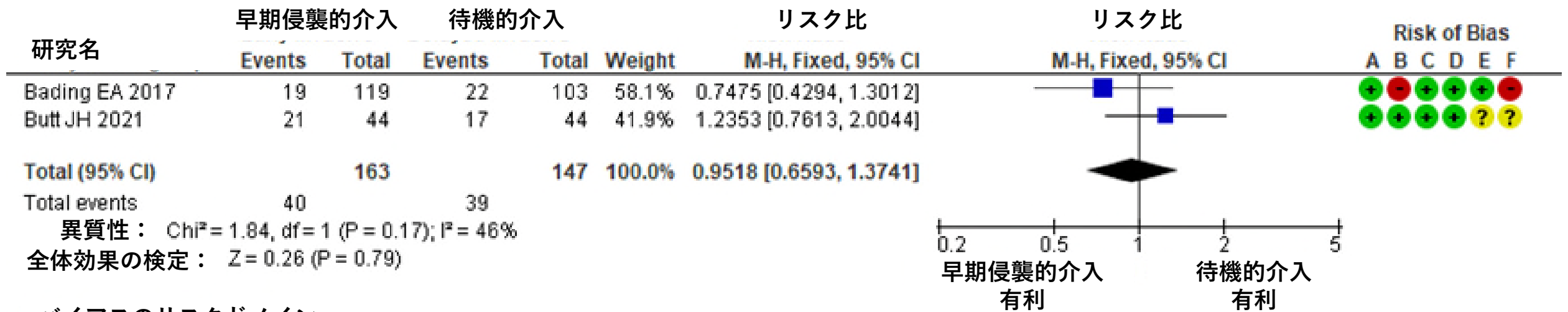
研究数	患者数		効果		信頼性	重要度
	早期侵襲的介入	待機的介入	相対効果 (95%CI)	絶対効果 (95%CI)		
2	40/163 (24.5%)	39/147 (26.5%)	リスク比 0.95 (0.66-1.37)	1,000名あたり10名少ない (110名少ない～80名多い)	とても低い	重大

^A 意図した介入からの逸脱によるバイアスが深刻だった

^B 研究間でうっ血性心不全の定義が異なっていた

^C リスク比のバラつきが大きかった

2年間の死亡または心筋梗塞再発



バイアスのリスクドメイン

- (A) ランダム手続き
- (B) 意図した介入からの逸脱
- (C) 欠損アウトカムデータ
- (D) アウトカム選定
- (E) 選択的報告
- (F) 全体